



FEELS LIKE HOME

THIS STUNNINGLY RENOVATED PERIOD ABODE IN MELBOURNE IS A CELEBRATION OF FAMILY, LOVE AND THE ENDURING WARMTH OF TIMBER

Story JACKIE BRYGEL Styling SARAH ELSHAUG
Photography ALEX REINDERS

LIGHT AND SHADE Nestled within a row of heritage-listed homes in Melbourne's bayside suburbs, the renovated circa 1918 abode Sally and Jason share with their seven-year-old son Max, and dogs Betty (pictured) and Sunday, is enjoying a new life. A successful marriage of old and new, the home is also a lesson in the power of contrast, with highlights of black and white acting as a foil to the dramatic use of timber throughout. "We wanted to create a home that would be warm and inviting," says interior designer Lauren O'Brien of Austin Design Associates, who worked with the couple on the project. The expansive kitchen is a highlight in many ways (above). "The kitchen in our previous home was smaller than our current ensuite," remarks Sally. >



If the dramatically reimagined heritage home of Sally and Jason appears to tick every box for the perfect family pad, it's no illusion. But that may well be because the renovation was a family affair in the truest sense – a labour of love that saw Sally's builder father, Colin, venture out of retirement to work alongside his daughter and son-in-law on the century-old residence. "It's been so special having my dad as the builder – and he's still here doing things!" says Sally, with a laugh. "I'm an only child and I was brought up with the attitude that 'girls can do anything boys can do'. So, we're all currently in the middle of laying tessellated tiles on the front verandah, after spending last year working on the garden together."

The beautiful result of that togetherness speaks for itself in this welcoming abode. "The home would not be even a shadow of what it is now without my father," she continues. "He's in his 70s, and yet he built the entire frame for the extension with just one other guy." That's not to say the hands-on family didn't encounter a few minor hiccups along the renovation way. "There were times when we were in the throes of it that we each thought, 'Oh my God! What have we done?'," says Sally with a smile. "But we came out the other side really well and we're all closer than ever."

After buying the double-fronted red-brick house in 2014, when their now seven-year-old son Max was one, Sally and Jason lived in the gracious home as it was for a year. "The house was in good condition," recalls Sally. "The front rooms had been given a lick of

paint over the years, but were still true to their era. We walked in and said, 'This is the house!' We could see that it had so much potential."

Yet while the couple loved the home's soaring ceilings, wide hallway and graceful period details, Sally and Jason were a little less enamoured by the "'80s tack-on" at the rear. "It had a green and apricot laminate kitchen," says Sally, "one that was functional, but which seemed disconnected to the living areas and therefore wasn't really conducive to modern family living."

Enlisting the architectural drafting services of West Valentine Design, Sally and Jason engaged Melbourne interior design practice Austin Design Associates to oversee the home's stunning new fixtures and fittings. "Austin Design were such an amazing help," says Sally. "They took on board our ideas and gave us the confidence to be brave and just go for it. It was a wonderful collaboration."

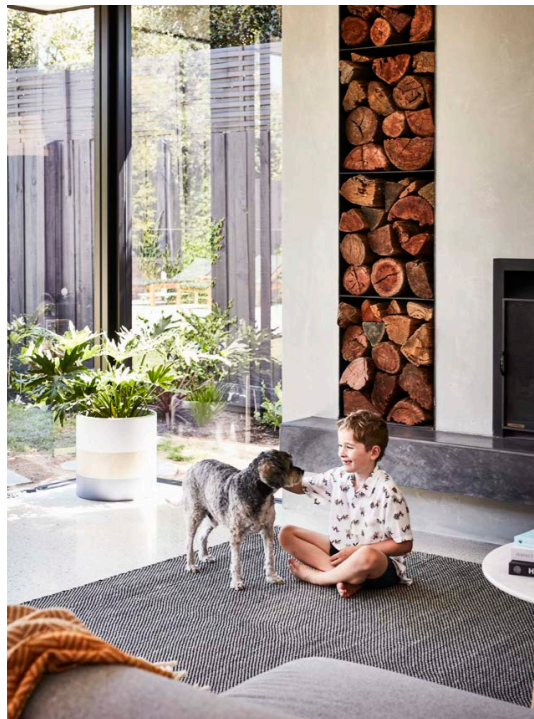
As ideas went to paper and then came to life, Sally never doubted what the hero material would be. And so it was that tactile timber came to be showcased to dramatic effect, inside and out. "Because I've always been surrounded by it, I have a real appreciation for it and so does Jason," says Sally. "Timber has such a lovely warmth to it and we find it makes a house feel so cosy."

Working carefully with the best of the original heritage structure, this is now a home that says much about the family's way of life, style and loves. "We do feel very blessed to be living here," says Sally, before adding: "It's a house that will always have a big attachment to our heart because of my father's involvement."

KITCHEN In the heart of the home, a sea of attractive messmate cabinetry reigns supreme in the breathtaking kitchen (top left & top right). Juxtaposed against pale grey Dekton Sirocco benchtops, the upper splashback in Dekton Sirius makes a striking statement. "We wanted to really 'hero' the timber, incorporating a substantial amount of it to provide a warm, homely space and to contrast with the concrete floor," says interior designer Lauren O'Brien of Austin Design Associates. The timber barstools (where Max is perched, pictured top left, while Jason and Sally look on) were found at Ethnicraft, while the matt black Zip HydroTap (top right) is as stylish as it is multi-functional.

DINING ROOM The family-friendly home now incorporates a contemporary extension at the rear, featuring the open-plan living space. "We lived in the home throughout the renovation," says Sally. "I look back and don't quite know how we did it and stayed sane!" A dramatic 3.3-metre ceiling defines the dining zone (below), which is anchored by a timber table with Bentwood side chairs – all from Mark Tuckey – and lit by the 'T-Mini Pulley' pendant from Artefact Industries. A Marmoset Found 'Pleat' vase in Ink Blue from Bungalow Trading Co brings colour to the table. >

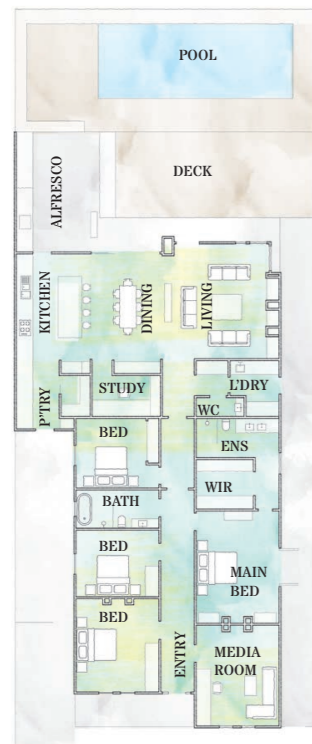




LIVING ROOM In the home's core living space (top & right), laid-back luxury is the name of the game. During the chillier months, the family love to hunker down in front of the fireplace. "One of my dad's steel-welder mates made the wood-box," says Sally. "It contains several weeks' worth of wood for the fireplace." On the adjacent wall, a Sidney Teodoruk and Neil Tomkins collaborative original artwork 'Night Walk' provides a glorious burst of colour. Layered with Burel cushions and a throw sourced from Figgoscope Curates, the Jordan navy 'Milo' sofa spells relaxation, which Max and Sunday (above) indulge in on a rug from The Rug Collection. "This is such a cosy space for all of us," says Sally. >

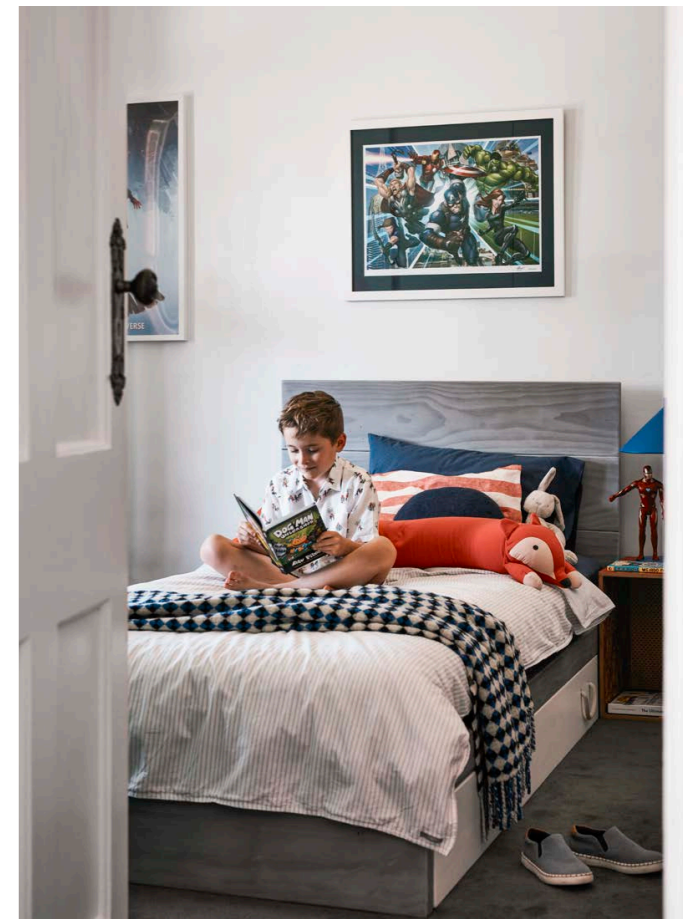
FLOOR PLAN

GROUND FLOOR



WE LOVE...
a bold bedhead

In Sally and Jason's bedroom, the custom 'Lincoln' bed frame by Forty Winks - complete with upholstered bedhead, floating bedside tables and attached backing panel - rightfully claims centre stage. The floating bedside tables and attached backing panel are sold separately. Visit fortywinks.com.au.

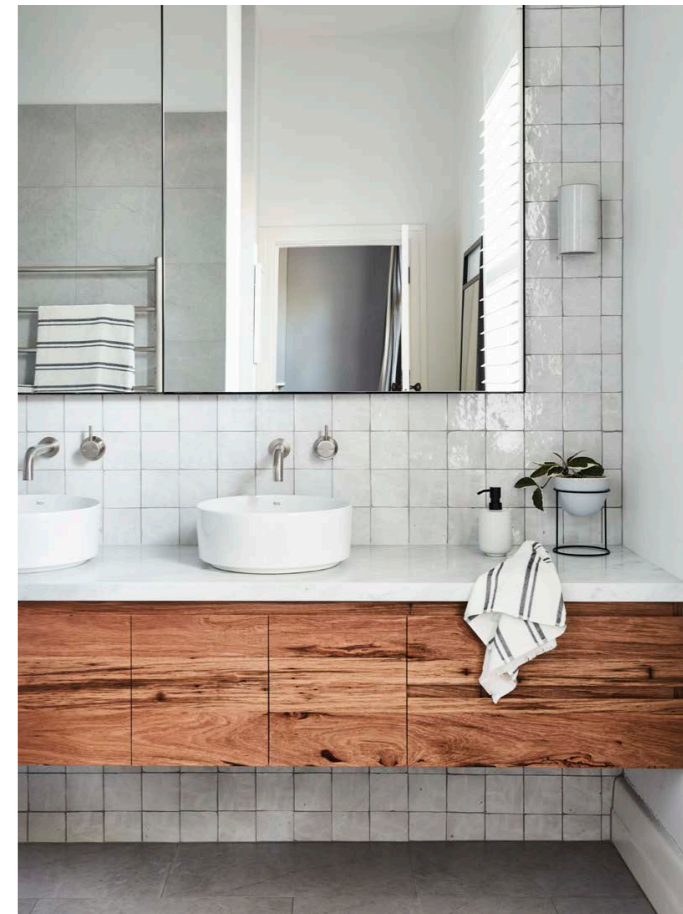


"OUR BEDROOM IS ONE OF MY favourite spaces IN THE HOME - IT'S VERY CALMING AND RELAXING" ~ SALLY

GUEST BEDROOM It's hard to imagine that what is now an inviting guest bedroom (top left) was the family's temporary kitchen during the renovation works. "My dad chopped up the old green kitchen to fit into this room and he did an amazing job," says Sally. On the wall, is a colourful limited edition print by Ali McNabney-Stevens - "I love her work," says Sally. The bed is dressed in linen found at Sally's favourite Melbourne store, Bungalow Trading Co. She also found the Society Of Wanderers 'Winifred Floral' quilt, in the couple's bedroom (opposite), there as well.

MAX'S BEDROOM Max reads in his room (top right), which features a limited-edition Marvel 'Melbourne' print, snapped up at an Avengers exhibition in Melbourne. The House Of Orange bed has been layered in a grown-up way with a Burel 'Azulejo' throw from Figgoscope Curates.

ENSUITE Crisp and clean, Sally and Jason's ensuite (right) has understated style, thanks to elements including a Carrara marble vanity top from CDK Stone, paired with gleaming 'Igloo' Moroccan mosaic tiles from Tiles Of Ezra and Roca Inspira 'Round Vessel' basins. 'Earth' wall lights from Anchor Ceramics light up the space, and a Kobn 'Crema' towel from Bungalow Trading Co injects texture. >





EXTERIOR Floor-to-ceiling powder-coated aluminium-framed glass doors slide open to the inviting alfresco deck and garden (below), where a new pool beckons. “The western side of our house borders three of the neighbours’ back gardens, so we have the sun out here all day long,” says Sally.



Betty and Sunday take a stroll along the driveway of the heritage home, which retains many of the beautiful hallmarks of its original era.

HERITAGE CHIC

the details



LINEN
Pink linen Living Space quilt cover from Spotlight.



CUSHION
Palisades ‘Illume’ cushion from Bungalow Trading Co.

INSIDE STORY

SALLY & JASON’S HOME

WHO LIVES HERE? Sally, an advertising producer; her husband, Jason, founder and CEO of Event Management International; their son Max, seven; plus Sunday the cavoodle and Betty the English staffy.

FAVOURITE SPOT FOR ME-TIME? Sally: “I’m probably a person who prefers family-time over me-time, so it would either be hanging out together in the garden or in the family room by the fire.”

ANYTHING LEFT ON THE TO-DO LIST?

“I’d like to re-do Max’s bedroom one day, mostly from a cosmetic point of view, and I’d love to add some cabinetry in the front sitting room. But once you start renovating, I don’t know if you ever stop!”

LESSONS LEARNED? “The amount of products and choice can be overwhelming. It pays to be very organised and I did a lot of research. Try to buy all of your tiles and taps - everything - before you start.”



JOINERY Messmate joinery makes a strong style statement throughout the home.

SOURCE BOOK

INTERIOR DESIGN Austin Design Associates, (03) 9592 6411, austindesign.com.au.

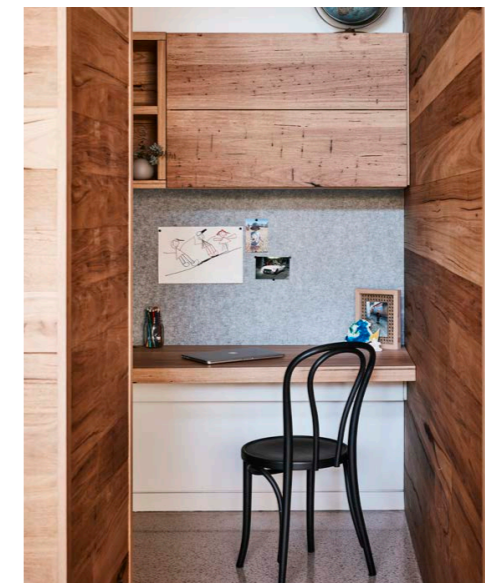
BUILDING DESIGNER West Valentine Design, westvalentine.com.au.
CABINETS Crafted Kitchens & Cabinets, craftedkitchensandcabinets.com.au.

“WE’VE ALWAYS LOVED TIMBER AND DIDN’T WANT A WHITE KITCHEN” ~ SALLY

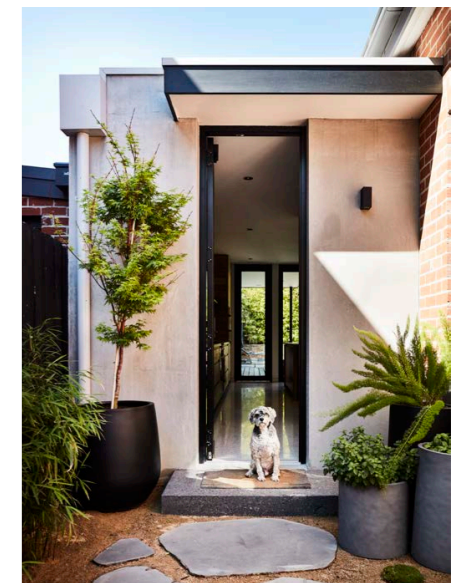


ACTUAL PAINT COLOURS MAY VARY ON APPLICATION

A curvaceous ‘I Catini Cielo’ washbasin cabinet from Design Precinct in the powder room.



“I love this open study, which is accessible from the kitchen,” says Sally.



Betty keeps a careful watch from the side of the house that features Bluestone pavers.